



# MONTHLY MEMBERSHIP PROGRESS REPORT

District 27 C2

Results as of: 5/31/2017

GMT: Judy Hankom

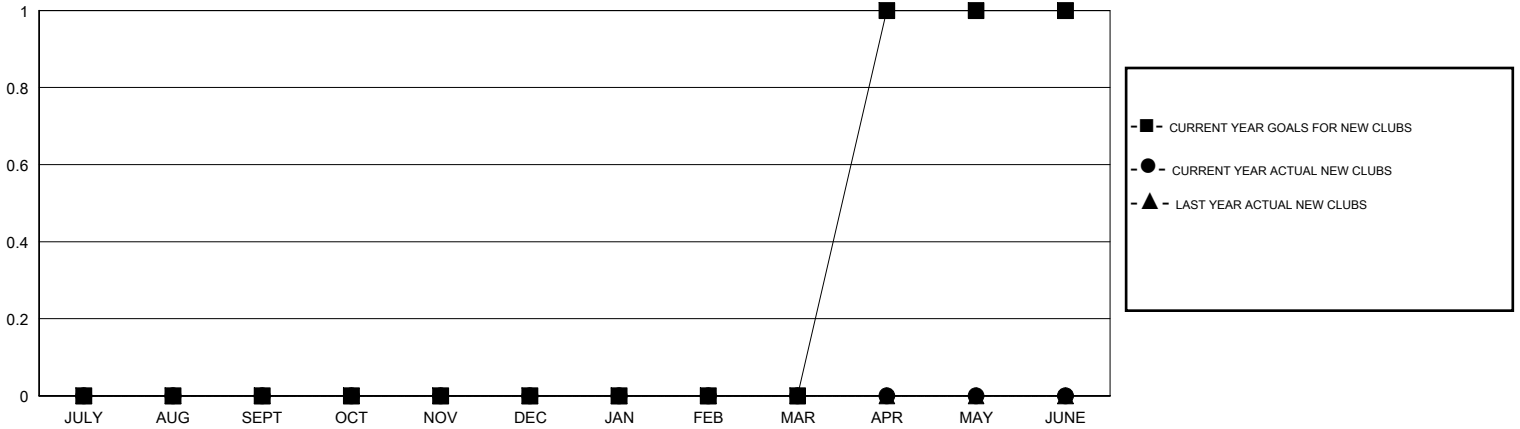
LOCATION WISCONSIN

GMT CA

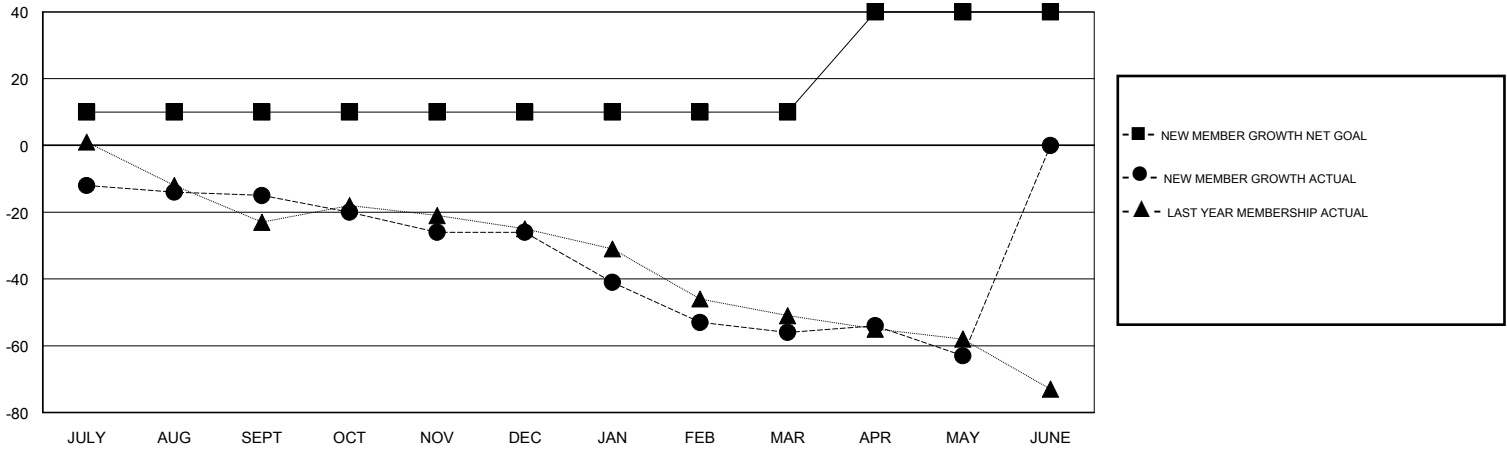
Clubs			
RESULTS FOR 2016-2017			
QUARTER	NEW CLUB GOAL	NEW CLUBS	DROPPED CLUBS
JULY/AUG/SEPT	0	0	0
OCT/NOV/DEC	0	0	0
JAN/FEB/MAR	0	0	0
APR/MAY/JUNE	1	0	0

Members			
RESULTS FOR 2016-2017			
QUARTER	NEW MEMBER GROWTH NET GOAL (not reinstated or transfers)	NEW MEMBER GROWTH ACTUAL (not reinstated or transfers)	DROPPED MEMBERS ACTUAL (including transfers)
JULY/AUG/SEPT	10	26	41
OCT/NOV/DEC	0	18	29
JAN/FEB/MAR	0	23	53
APR/MAY/JUNE	30	16	23

GOALS AND ACTUAL NEW CLUBS CUMULATIVE



GOALS AND ACTUAL MEMBERS CUMULATIVE



DROPPED CLUBS: 0	28 CLUBS OF 44 ADDED 1 OR MORE NEW MEMBERS	<u>GENDER DISTRIBUTION</u>
DROPPED MEMBERS	<a href="#">CLICK HERE FOR CUMULATIVE MEMBERSHIP DATA</a>	MALE 1,091 (73.07%)
DECEASED 22		FEMALE 402 (26.93%)
CLUB CANCELLED 0		TOTAL FAMILY UNIT MEMBERS 347
OTHER 124		FAMILY MEMBERS PAYING HALF DUES 175
TOTAL 146		